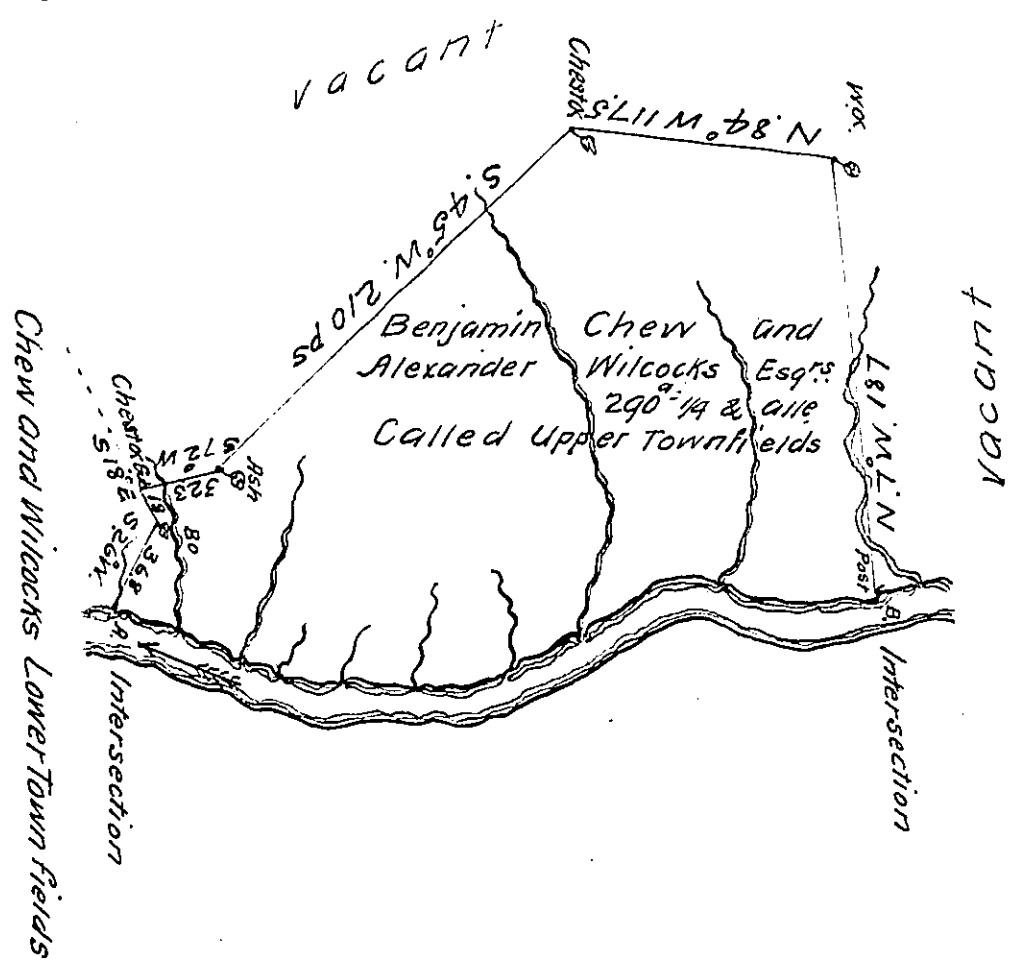


River Courses from A

- S. 70° E. --- 97
- N. 88° E. --- 65
- N. 70° E. --- 32
- N. 60° E. --- 75
- N. 87° E. --- 16
- S. 69° E. --- 32
- N. 82° E. --- 52
- to B on the Bank
- 349



Situated on the North Side of Yough between the falls and Turkey-foot in Bedford County and survey'd the 6th day of May 1776 at the request of said Chew and Wilcocks in lieu of and in part satisfaction of 16 Warrants granted them the 5th day of October 1774 for Lands before that time appropriated by divers other persons

pr
Alexander McClean Dep^t

IN TESTIMONY that the above is a copy of the original remaining on file in the Department of Internal Affairs of Pennsylvania, made conformably to an Act of Assembly approved the 16th day of February, 1833, I have hereunto set my Hand and caused the Seal of said Department to be affixed at Harrisburg, this thirteenth day of March 1912

Henry Horner
Secretary of Internal Affairs.